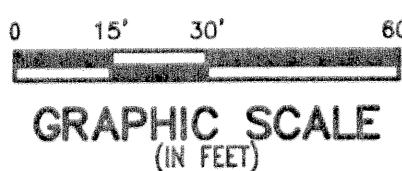
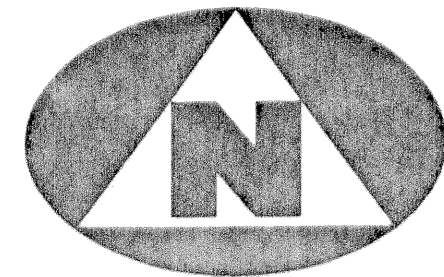
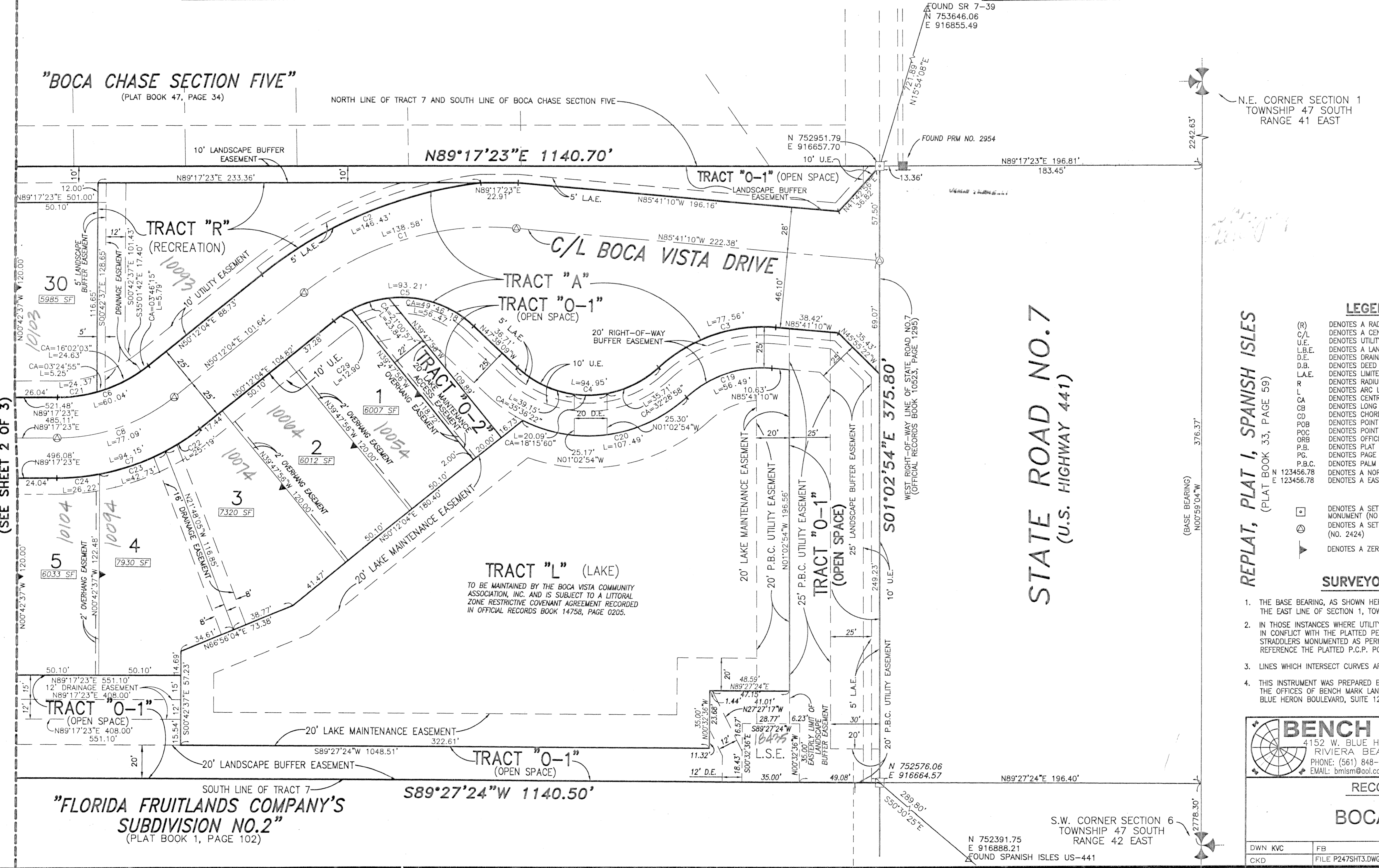
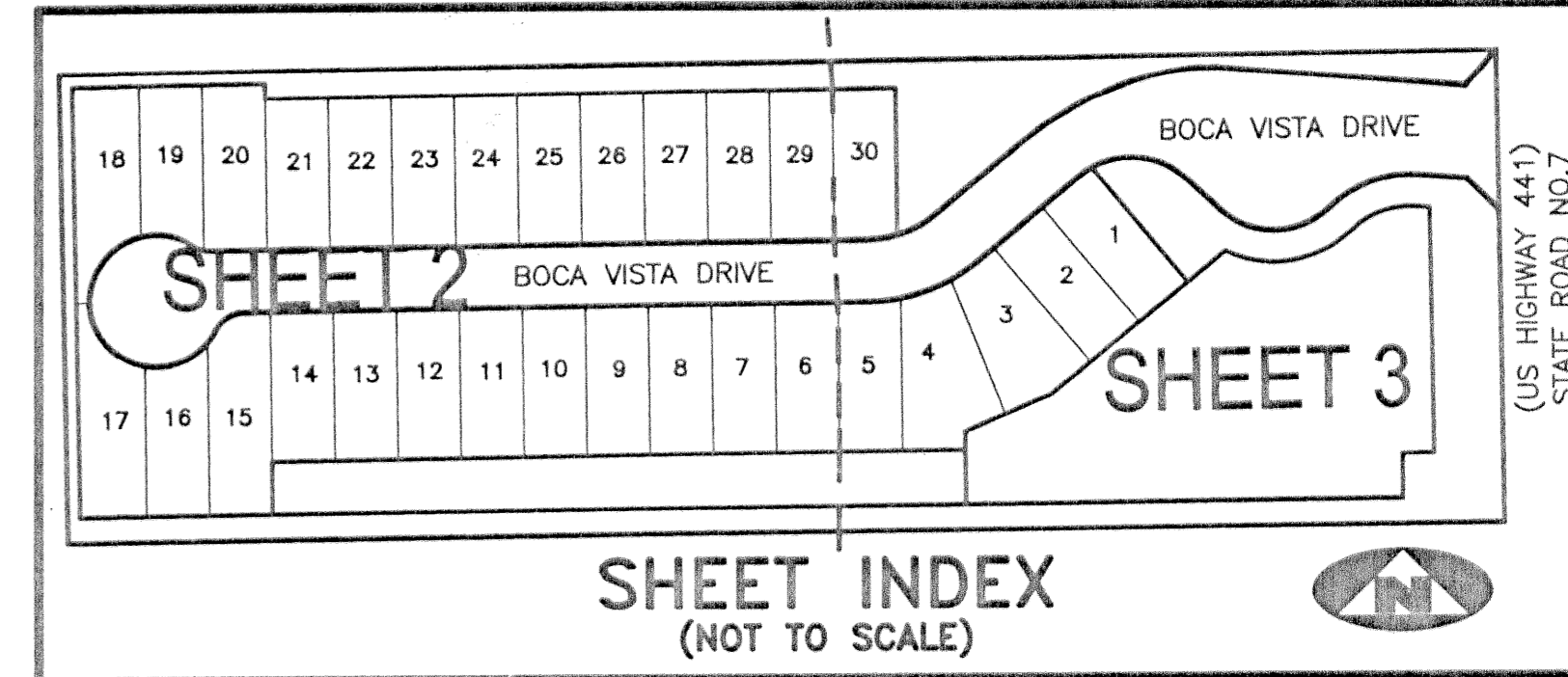


# BOCA VISTA

BEING A REPLAT OF A PORTION OF TRACT 7, FLORIDA FRUIT LANDS COMPANY'S SUBDIVISION NO.2  
RECORDED IN PLAT BOOK 1, PAGE 102, PUBLIC RECORDS PALM BEACH COUNTY, FLORIDA, AND LYING IN SECTION 1, TOWNSHIP 47 SOUTH, RANGE 41 EAST  
PALM BEACH COUNTY, FLORIDA.



CURVE TABLE											
C1	R=180'	CA=44°06'46"	L=138.58'	LCB=N72°15'27"E	CHD=135.19'	C14	R=25'	CA=12°51'21"	L=5.61'	LCB=N84°16'56"W	CHD=5.60'
C2	R=260'	CA=32°15'08"	L=146.43'	LCB=N66°20'08"E	CHD=144.50'	C15	R=25'	CA=21°29'28"	L=9.38'	LCB=N67°06'53"W	CHD=9.32'
C3	R=92'	CA=48°18'19"	L=77.56'	LCB=N70°09'40"E	CHD=75.29'	C16	R=53'	CA=47°03'03"	L=43.52'	LCB=N79°53'20"W	CHD=42.31'
C4	R=63'	CA=86°21'20"	L=94.95'	LCB=N89°11'11"E	CHD=86.22'	C17	R=53'	CA=77°46'57"	L=71.95'	LCB=N37°41'41"E	CHD=66.55'
C5	R=65'	CA=82°09'47"	L=93.21'	LCB=N88°43'03"W	CHD=85.43'	C18	R=53'	CA=79°01'04"	L=73.10'	LCB=N40°42'18"W	CHD=67.44'
C6	R=88'	CA=39°05'19"	L=60.04'	LCB=N69°44'43"E	CHD=58.88'	C19	R=67'	CA=48°18'19"	L=56.49'	LCB=N70°09'40"E	CHD=54.83'
C7	R=138'	CA=39°05'19"	L=94.15'	LCB=N69°44'44"E	CHD=92.33'	C20	R=88'	CA=69°59'02"	L=107.49'	LCB=N81°00'02"E	CHD=100.93'
C8	R=113'	CA=39°05'19"	L=77.09'	LCB=N69°44'43"E	CHD=75.61'	C21	R=88'	CA=15°52'06"	L=24.37'	LCB=N81°21'20"E	CHD=24.29'
C9	R=231.49'	CA=20°18'56"	L=82.08'	LCB=N79°07'55"E	CHD=81.65'	C22	R=138'	CA=10°27'38"	L=25.19'	LCB=N55°25'53"E	CHD=25.16'
C10	R=25'	CA=62°50'39"	L=27.42'	LCB=N57°52'03"E	CHD=26.07'	C23	R=138'	CA=17°44'32"	L=42.73'	LCB=N69°31'58"E	CHD=42.56'
C11	R=25'	CA=34°20'47"	L=14.99'	LCB=N73°32'13"W	CHD=14.76'	C24	R=138'	CA=10°53'09"	L=26.22'	LCB=N83°50'49"E	CHD=26.18'
C12	R=53'	CA=13°08'19"	L=12.12'	LCB=N32°59'53"E	CHD=12.10'	C29	R=65'	CA=11°22'31"	L=12.90'	LCB=N55°53'20"E	CHD=12.88'
C13	R=53'	CA=60°14'09"	L=55.72'	LCB=N69°40'06"E	CHD=53.19'						



N.E. CORNER SECTION 1  
TOWNSHIP 47 SOUTH  
RANGE 41 EAST

REPLAT, PLAT 1, SPANISH ISLES  
(PLAT BOOK 33, PAGE 59)

- LEGEND:**
- (R) DENOTES A RADIAL LINE
  - C/L DENOTES A CENTERLINE
  - U.E. DENOTES UTILITY EASEMENT
  - L.B.E. DENOTES A LANDSCAPE BUFFER EASEMENT
  - D.E. DENOTES DRAINAGE EASEMENT
  - D.B. DENOTES DEED BOOK
  - L.A.E. DENOTES LIMITED ACCESS EASEMENT
  - R DENOTES RADIUS DISTANCE
  - L DENOTES ARC LENGTH DISTANCE
  - CA DENOTES CENTRAL ANGLE
  - CB DENOTES LONG CHORD BEARING
  - CD DENOTES CHORD DISTANCE
  - POB DENOTES POINT OF BEGINNING
  - POC DENOTES POINT OF COMMENCEMENT
  - ORB DENOTES OFFICIAL RECORDS BOOK
  - P.B. DENOTES PLAT BOOK NUMBER
  - P.C. DENOTES PAGE NUMBER
  - P.B.C. DENOTES PALM BEACH COUNTY
  - N 123456.78 DENOTES A NORTHING COORDINATE
  - E 123456.78 DENOTES A EASTING COORDINATE
  - DENOTES A SET PERMANENT REFERENCE MONUMENT (NO. 2424)
  - ⊙ DENOTES A SET PERMANENT CONTROL POINT (NO. 2424)
  - ▶ DENOTES A ZERO LOT LINE

**SURVEYOR'S NOTES:**

- THE BASE BEARING, AS SHOWN HEREON, IS NORTH 00°59'04" WEST ALONG THE EAST LINE OF SECTION 1, TOWNSHIP 47 SOUTH, RANGE 41 EAST.
- IN THOSE INSTANCES WHERE UTILITY/DRAINAGE STRUCTURES ARE CONSTRUCTED IN CONFLICT WITH THE PLATTED PERMANENT CONTROL POINTS (P.C.P.) POSITION, STRADDLERS MONUMENTED AS PERMANENT CONTROL POINTS WILL BE SET TO REFERENCE THE PLATTED P.C.P. POSITION.
- LINE WHICH INTERSECT CURVES ARE NOT RADIAL UNLESS OTHERWISE NOTED.
- THIS INSTRUMENT WAS PREPARED BY WM. R. VAN CAMPEN, P.S.M. IN AND FOR THE OFFICES OF BENCH MARK LAND SURVEYING AND MAPPING INC., 4152 WEST BLUE HERON BOULEVARD, SUITE 121, RIVIERA BEACH, FLORIDA.

**BENCH MARK LAND SURVEYING & MAPPING, INC.**  
 4152 W. BLUE HERON BOULEVARD • SUITE 121  
 RIVIERA BEACH • FLORIDA 33404  
 PHONE: (561) 848-2102 • L.B. 2171 • FAX: (561) 844-9659  
 EMAIL: bmlsm@aol.com WEB: http://members.aol.com/bmlsm

RECORD PLAT			
<b>BOCA VISTA</b>			
DWN KVC	FB	DATE 6-4-2001	WO.# P247
CKD	FILE P247SHT3.DWG	SCALE 1"=30'	SHEET 3 OF 3

SUBDIVISION Boca Vista  
 BOOK 96 PAGE 07  
 FLOOD MAP # 100B  
 ZONING RS  
 QUAD # 08  
 SE R01-441  
 TAZ 081  
 FUD NAME

"FLORIDA FRUITLANDS COMPANY'S  
 SUBDIVISION NO. 2"  
 (PLAT BOOK 1, PAGE 102)

S.W. CORNER SECTION 6  
 TOWNSHIP 47 SOUTH  
 RANGE 42 EAST  
 N 752391.75  
 E 916888.21  
 FOUND SPANISH ISLES US-441